



devdept  
SOFTWARE

# eyeshot

**CAD CONTROL**

Redistributable royalty  
free licenses

Pricing 2023 / EUR

Applicable from January 1<sup>st</sup>, 2023



| **03** New Licenses

| **04** Renewals

| **05** Upgrades

| **06** Discounts

| **08** Special pricing

| **09** Source Code Escrow

# New Licenses

Initial license purchase. Includes WinForms UI, WPF UI and neutral cross-platform core.

EDITION	SKU	PRICE
Pro	EYEPRO-WS	900 €
Ultimate	EYEULT-WS	1.350 €
Fem	EYEFEM-WS	1.800 €

## What's Included?

### Pro Edition

Designed for Polygonal modeling, drafting and point cloud.

### Ultimate Edition

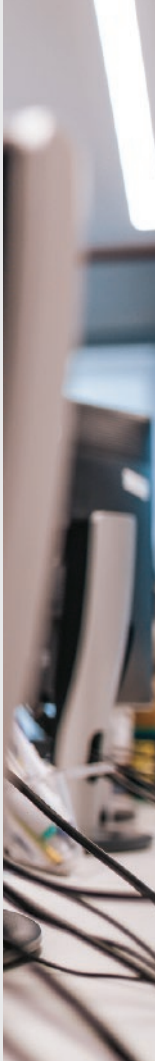
Includes everything in Pro plus NURBS and BRep modeling, IGES/STEP and CAM.

### Fem Edition

Includes everything in Ultimate plus Geometry meshing and Finite Element Analysis.

- ✔ Each developer working on the application needs an individual license.
- ✔ Each license is perpetual and the subscription includes 12 months of maintenance and support.

All prices exclude taxes.  
Prices subject to change without notice.





## Renewals

Optional maintenance and support subscription extension of 12 months.

### Early

Up to 30 days after the subscription has expired.

EDITION	SKU	PRICE
Pro	EYEPRO-SR	490 €
Ultimate	EYEULT-SR	740 €
Fem	EYEFEM-SR	990 €

### Welcome Back

When the subscription has been expired for more than 30 days.

EDITION	SKU	PRICE
Pro	EYEPRO-WBR	760 €
Ultimate	EYEULT-WBR	1.150 €
Fem	EYEFEM-WBR	1.530 €

# Upgrades

The switch to a higher product edition.

## Early

Within 30 days from initial purchase date. Original subscription period stays the same.

EDITION	SKU	PRICE
From Pro to Ultimate	EYEULT-EU	450 €
From Ultimate to Fem	EYEFEM-EU	450 €

## Late

Up to 30 days after the subscription has expired. 12 months of maintenance and support starts over.

EDITION	SKU	PRICE
From Pro to Ultimate	EYEULT-LU	670 €
From Ultimate to Fem	EYEFEM-LU	900 €

## Welcome Back

When the subscription has been expired for more than 30 days. 12 months of maintenance and support starts over.

EDITION	SKU	PRICE
From Pro to Ultimate	EYEULT-WBU	1.210 €
From Ultimate to Fem	EYEFEM-WBU	1.620 €

- ✓ The Subscription includes priority technical support, updates and upgrades.
- ✓ To continue to receive new features, performance enhancements and priority technical support, make sure to renew the maintenance and support subscription each year or choose a multi-year subscription.

All prices exclude taxes.  
Prices subject to change  
without notice.

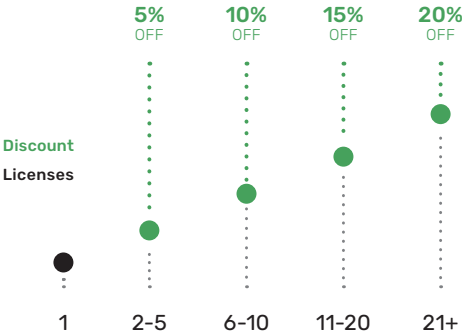


# Discounts

The volume and multi-year discounts.

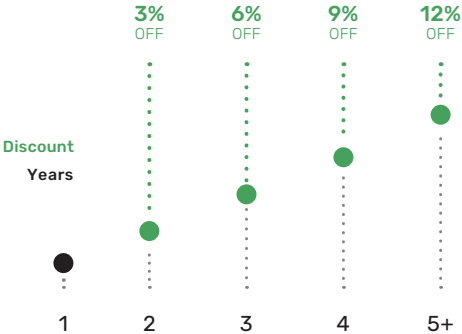
## VOLUME DISCOUNT

- ✓ Each developer working on the application must obtain an individual product license.
- ✓ Tiered discounts are available when purchasing more than one license.



## MULTI-YEAR DISCOUNT

- ✓ Progressive discounts are available on the subsequent years based on the number of years purchased.
- ✓ Multi-year subscriptions are available on demand for all products and services.



## Examples of how the discounts play together

For illustrative purposes all the examples present transactions of Eyseshot Ultimate license, priced at 1.350 € with different number of licenses or years of M&S purchased. First year is included in the license price.

### Example 1 / Multiple licenses

Licenses	Years	Subtotal	Discount Eligibility   Savings	Total
3	1	3 x 1.350 €	<b>Volume discount</b>   5% off the license price 5% x (3 x 1.350 €)	
		4.050 €	<b>Savings: 202,50 €</b>	<b>3.847,50 €</b>

### Example 2 / Multiple licenses and multiple years of M&S

3	2	3 x 1.350 € 3 x 740 €	<b>Volume discount</b>   5% off the license price 5% x (3 x 1.350 €) + <b>Multi-year discount</b>   volume discount + 3% = 8% off subsequent years 8% x (3 x 740 €)	
		6.270 €	<b>Savings: 380,10 €</b>	<b>5.889,90 €</b>

### Example 3 / Multiple licenses and multiple years of M&S

3	3	3 x 1.350 € 3 x 740 € x 2	<b>Volume discount</b>   5% off the license price 5% x (3 x 1.350 €) + <b>Multi-year discount</b>   volume discount + 6% = 11% off subsequent years 11% x (3 x 740 € x 2)	
		8.490 €	<b>Savings: 690,90 €</b>	<b>7.799,10 €</b>

A group of people, including two men and a woman, are working together at a desk in a workshop or office setting. One man is pointing at a document while the others look on. The scene is dimly lit with warm tones.

## Special Pricing

- ✔ Qualified academic, government and non-profit entities can benefit from a 10% discount.
- ✔ A document or certification may be required to determine if the discount is applicable.
- ✔ These special discounts apply only to non-commercial use of the product.

# Source Code Escrow

Source code escrow is the deposit of software source code with a neutral 3rd party software escrow agent.

The software licensor securely deposits the application source code with the escrow agent. In the event that a vendor fails to meet the software license agreement or files for bankruptcy the source code can be released by the escrow agent to the licensee.

Single user plans agreed upon the company’s legal department are available upon request.

AGREEMENT	SKU	BILLED	PRICE
Standard multi-user plan	ESCROW-MUP	Annually	5.000 €

**Source Code Escrow agent:**

Lincoln-Parry SoftEscrow, Inc.  
Distribution Department  
100 Cambridge Street  
14th Floor, Suite 1400  
Boston, MA 02114

**For more information visit:**

[www.softescrow.com](http://www.softescrow.com)



The logo for devDept, featuring the word "dev" in a lowercase sans-serif font, followed by a stylized white icon of a computer monitor with a checkmark-like shape inside, and then the word "ept" in a lowercase sans-serif font.

SOFTWARE

software development tools for  
the engineering industry

**devDept Software S.r.l.**

Via del Faggiolo 1/11d, 40132 Bologna, Italy

Business register of Bologna number: BO496718

EU VAT registration number: IT03158131205

Phone: +39 (051) 619 7203

[devdept.com](http://devdept.com)